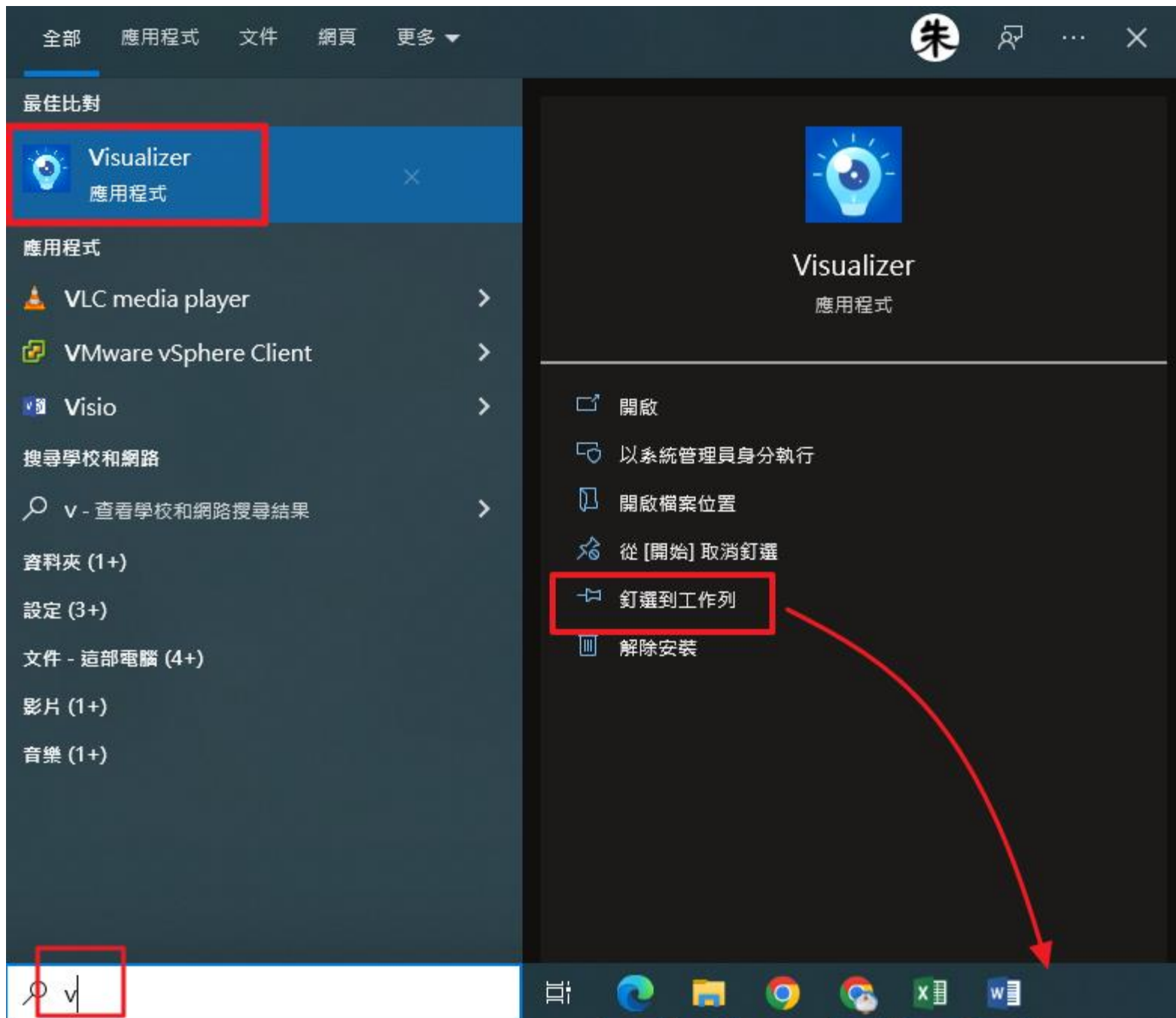


IPEVO VISUALIZER介紹

下載軟體連結：

https://ipevo-api-cms.s3-us-west-1.amazonaws.com/software/visualizer/download/Windows_10/Visualizer_win10_v3.0.727.0.msi.zip



1. 下載安裝好之後，在左下角放大鏡，搜尋visualizer，其實按v大概就會出現

2. 點選【釘選到工作列】，之後就可以在最下方工作列看見它

IPEVO Software End User License Agreement

BY DOWNLOADING, INSTALLING OR USING THE (A) IPEVO VISUALIZER, (B) IPEVO ANNOTATOR, (C) IPEVO WHITEBOARD, (D) IPEVO CAMERAKIT, (E) IPEVO IW DRIVER, (F) IPEVO VISUALIZER LTSE, (G) IPEVO IDOCCAM, AND (H) IPEVO CAMCONTROL (EACH OF WHICH IS DEEMED, AS APPLICABLE, THE “SOFTWARE”), YOU AGREE TO BE BOUND BY THIS END USER LICENSE AGREEMENT (the “Agreement”). IF YOU DO NOT AGREE, DO NOT INSTALL, DOWNLOAD, COPY OR USE THE SOFTWARE AND YOU MUST DELETE OR DESTROY ANY COPY IN YOUR POSSESSION OR CONTROL.

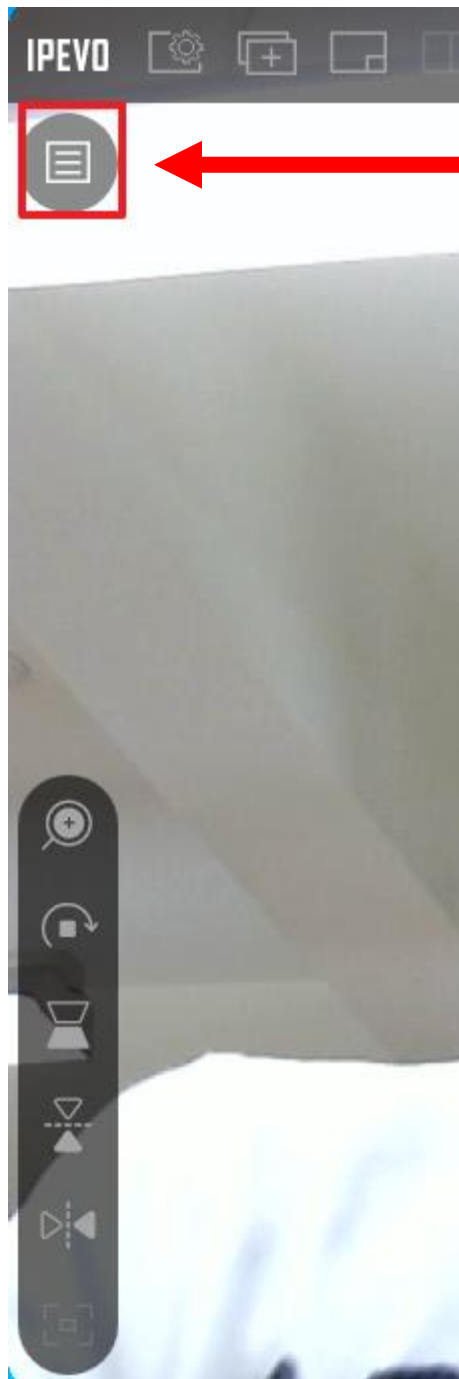
This Agreement is between you (“you” or “your”) and IPEVO, Inc. (“Licensor”), located at 440 N. Wolfe Road, Sunnyvale, CA 94085, for the use of the Software, including all associated media, and printed or electronic documentation. IPEVO’s collection and use of personal information in connection with the Software is described in

☐ 我已閱讀並理解上述協議。

不同意

同意

打勾勾~~



點選左上角三條線

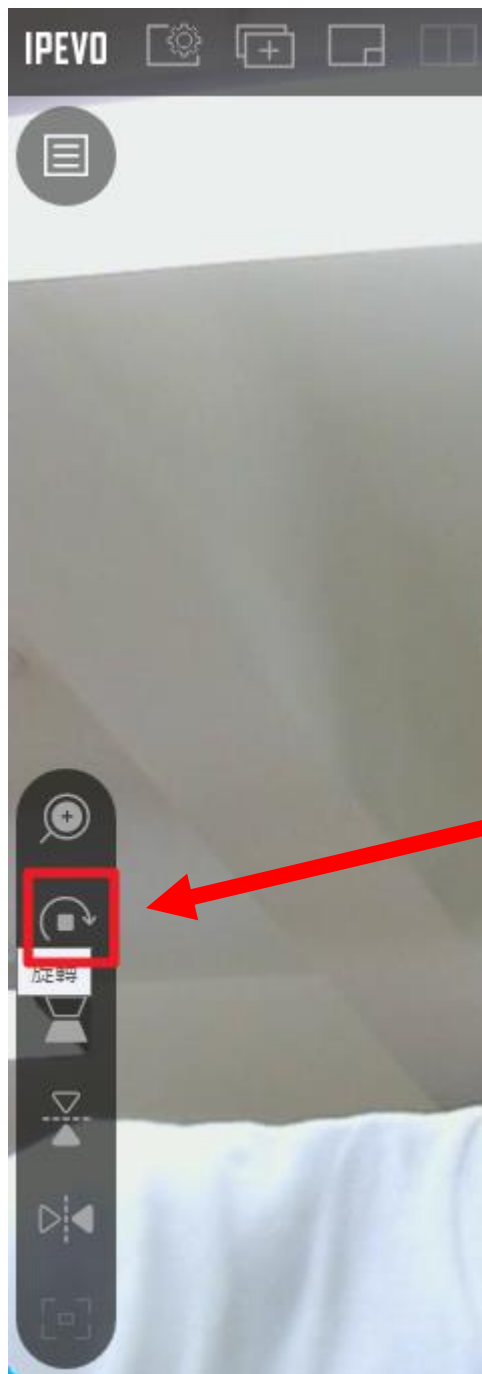


點選：選擇相機

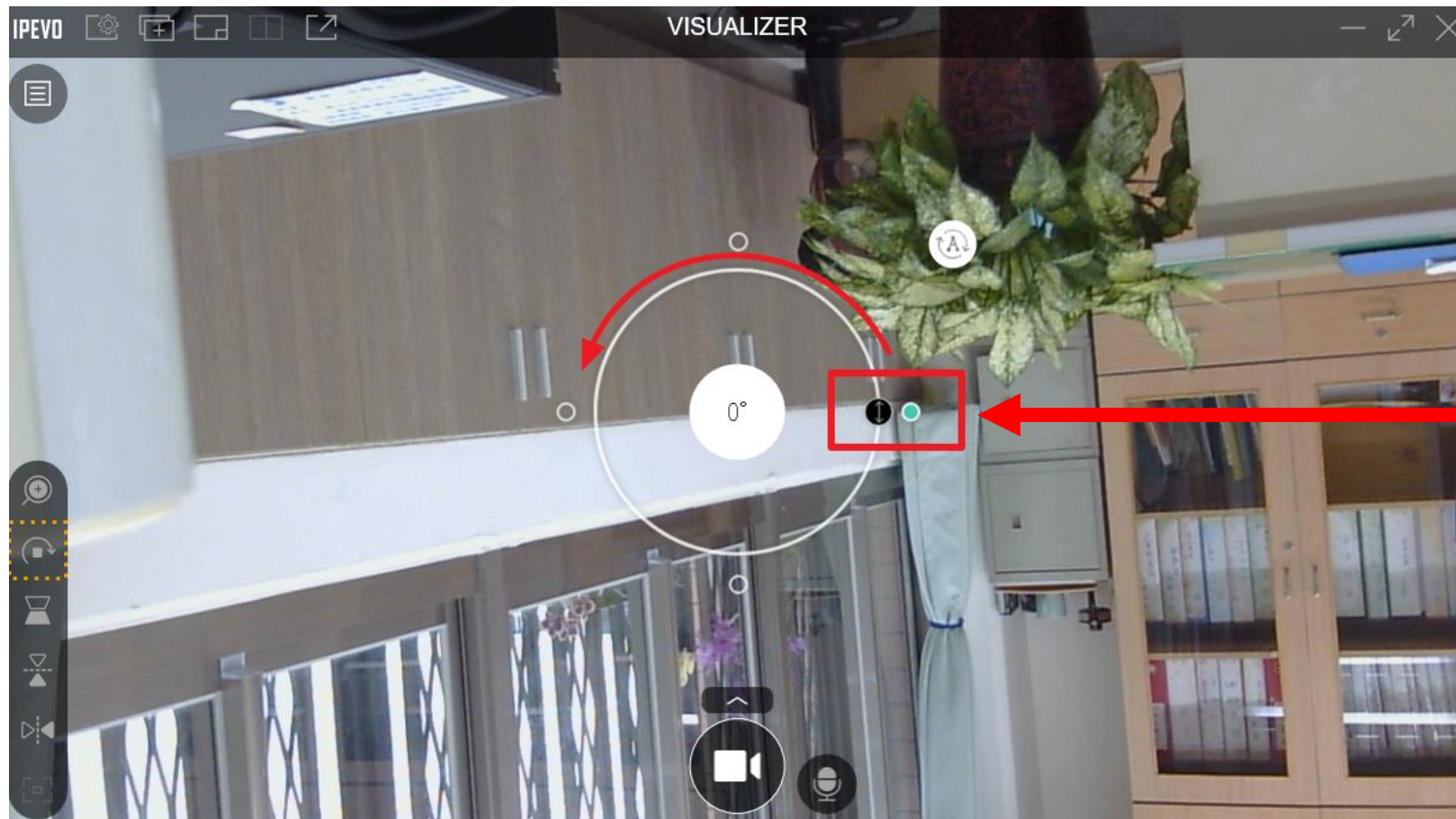


【選擇相機】：
如果電腦有連接兩個以上的攝影機，
要選U50

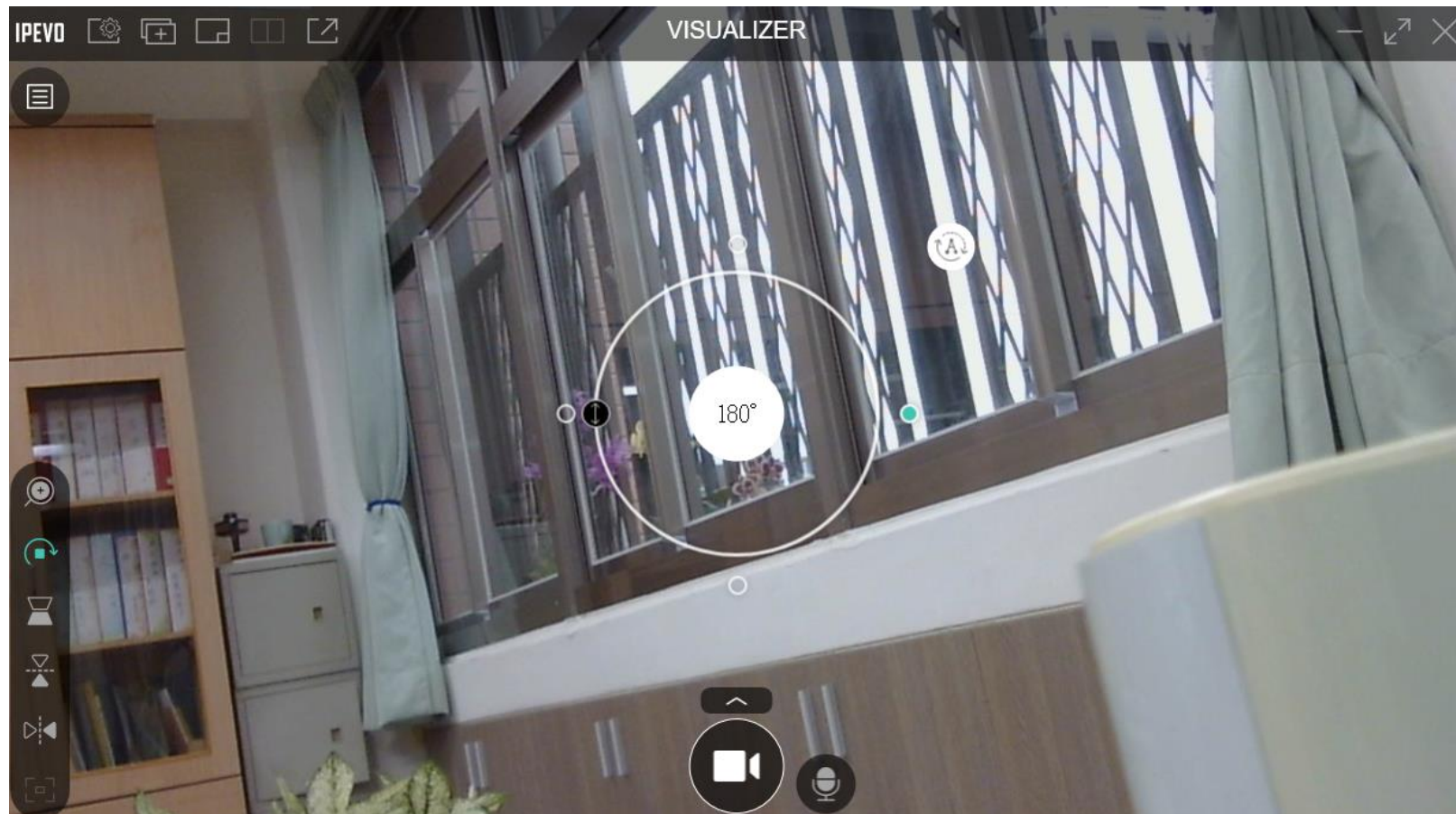
【調整亮度對比】
如果教室投影機燈
泡較暗，在這裡將
亮度對比調高一點



【旋轉畫面】：
U50鏡頭支撐臂可以上下調整，有時候沒擺正，造成畫面歪斜或是上下顛倒，直接調整【旋轉畫面】就可以



點選拖曳到畫面擺正即可



多練習幾次就
會越來越熟悉！